



We are  
**Social  
Value Lab**

Social Value Lab is an agency with a difference; part consultancy, part think tank, part incubator.

We work in **Scotland**, **UK-wide** and **internationally** - conducting **research**, demonstrating **impact**, developing new social **ventures**, and **supporting** others to do the same.

We produce **evidence** and **ideas** that help to make things **work better**... communities, organisations and services.

[www.socialvaluelab.org.uk](http://www.socialvaluelab.org.uk)



# What we do



## Social Research

We produce high quality and insightful research that really matters. Our experienced team conducts social research based on a full range of quantitative, qualitative, and 'mixed methods' designs.



## Service Design & Innovation

We explore deep-rooted problems from new angles and come up with radical alternatives. We bring together multi-disciplinary teams to help transform public services and the work of large charities.



## Strategy & Collaboration

We help to build partnerships and plans that deliver results. Our emphasis is on finding common ground between public authorities and the third sector and on tackling shared challenges head on.



## Evaluation Support

We conduct rigorous, outcome-focused evaluation work. We use techniques that are participative and inclusive, and are committed to building evaluation into the everyday work of organisations.



## Social Impact Measurement

We help organisations to measure impact, make their case, and extend influence. We focus on presenting evidence in a simple, accurate, and compelling way. Narrative, numbers, visuals, and video are all combined to good effect.

# How we do it

## Passionate

We want to make a difference in everything we do. That's why we use ideas and evidence where we can to tackle social issues and improve people's lives. Passion, commitment, and energy are the essential traits of everyone that works with us.

## Expert

We bring together experts from a variety of fields. The Social Value Lab 'family' now extends to more than 40 technical and topic specialists (social researchers, service designers, social business consultants, and evaluators).

## Responsive

We find ways of making things happen. Sometimes we respond to tenders and deliver as consultants. In other cases we spot the gaps and design new projects and programmes that are delivered in partnership.

## Unconventional

We're unconventional in many ways, not least in our structure. Social Value Lab operates as a social-purpose business that is part-owned by employees and part-owned by leading charity CEIS.

## Collaborative

Our approach is based on collaboration. We tend to work with rather than for others. This provides the basis for long-term, constructive, and supportive relationships.

## Social Value Lab applies its expertise and energy to a variety of issues and fields.

We bring particular expertise in:

Social Enterprise

Health and social care

Community capacity building

Neighbourhood renewal and regeneration

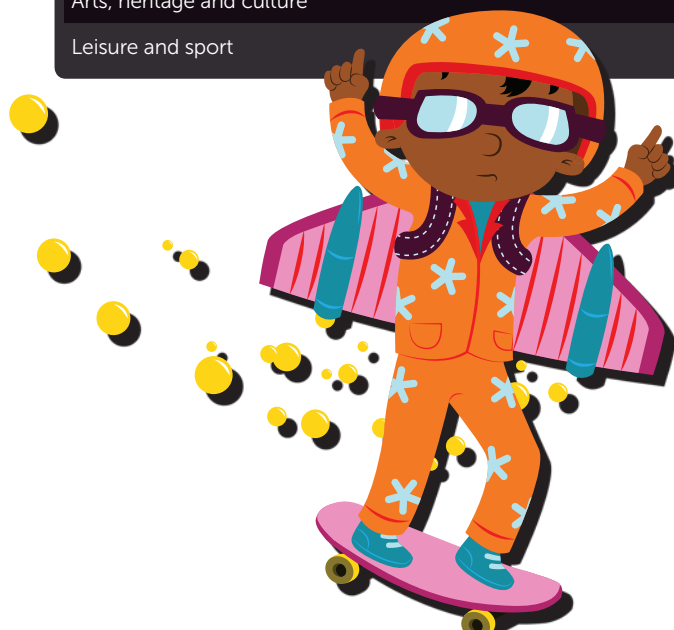
Children and young people's services

Community assets (land, buildings, energy)

Employability and employment

Arts, heritage and culture

Leisure and sport



# Find out more [www.socialvaluelab.org.uk](http://www.socialvaluelab.org.uk)

We work with a wide range of partners and clients – from frontline charities to a supporting cast of grant-makers, investors, support agencies, public authorities and businesses. All are striving to bring about social change in one way or another.

Talk to one of our senior team:



**Jonathan Coburn**

Title: **Director**  
Tel: **07786 735 395**  
Email: [jonathan@socialvaluelab.org.uk](mailto:jonathan@socialvaluelab.org.uk)



**Rick Rijdsdijk**

Title: **Director**  
Tel: **07786 735 762**  
Email: [rick@socialvaluelab.org.uk](mailto:rick@socialvaluelab.org.uk)



**Gerry Higgins**

Title: **Director**  
Tel: **0141 530 1479**  
Email: [gerry@socialvaluelab.org.uk](mailto:gerry@socialvaluelab.org.uk)



**Marion Lacey**

Title: **Senior Consultant**  
Tel: **0141 530 1479**  
Email: [marion@socialvaluelab.org.uk](mailto:marion@socialvaluelab.org.uk)

## Get in touch! –

Like what you've seen or heard?  
Want to explore opportunities for collaboration? Want to hire us?

**Call us on 0141 530 1479**

Coming to visit? We're based in a fantastic creative space in the heart of Glasgow's Merchant City.

Studio 222, South Block, 60 Osborne Street, Glasgow, G1 5QH.

