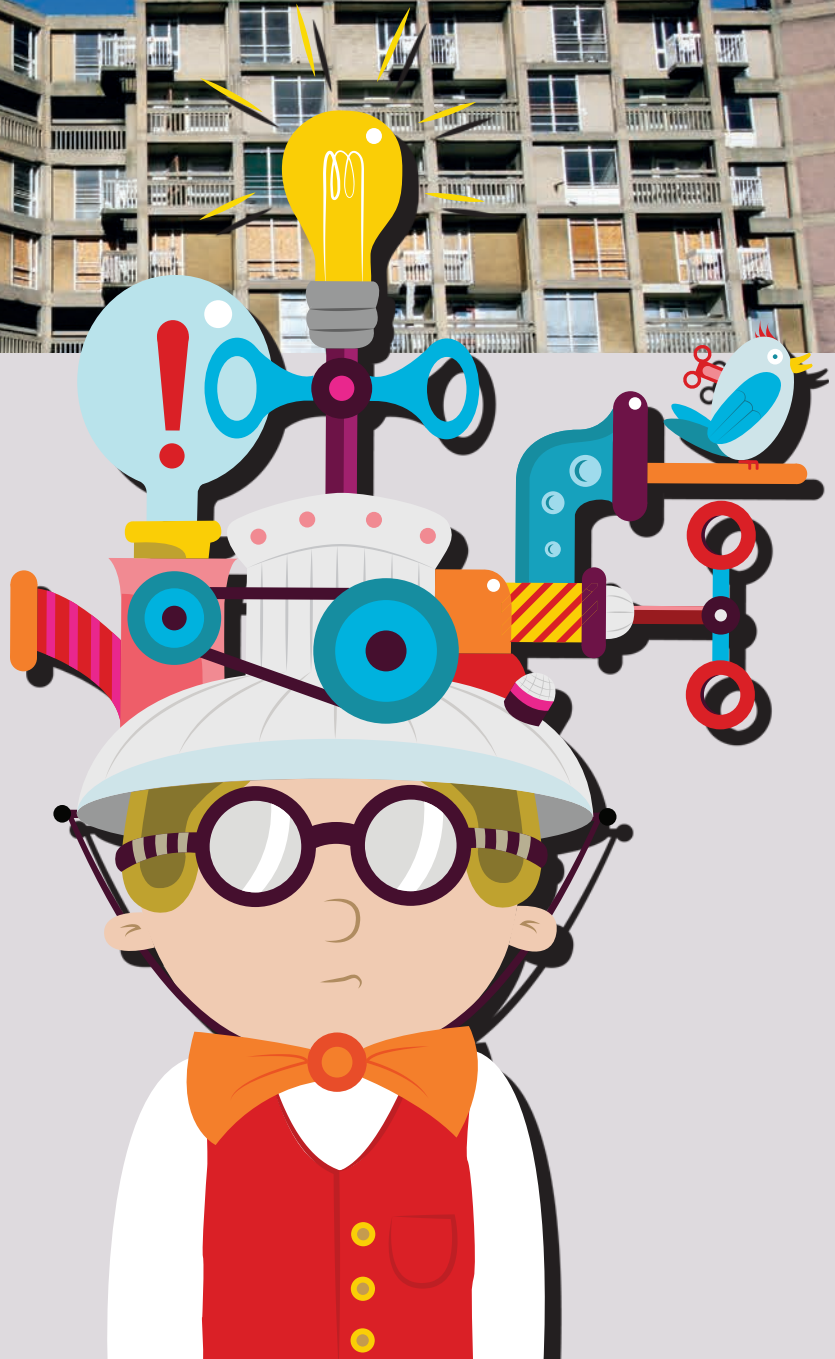


## Services

# Evaluation Support

We conduct rigorous, outcome-focused evaluation work. We use techniques that are participative and inclusive, and are committed to building evaluation into the everyday work of organisations.





# Evaluation Support

Effective evaluation has never been more important. With resourcing decisions coming under increasing scrutiny, it's a time for solid evidence rather than hunches or guesswork.

We carry out rigorous evaluation work, and help others to do the same. Our focus is on outcomes – gauging the changes, benefits, learning or other effects that result from activities.

## We apply our expertise in various ways:

---

**Organisational reviews.** We offer diagnostic reviews and health checks to assess organisational progress, performance, and capacity.

---

**Monitoring frameworks.** We help design and implement effective project and programme monitoring arrangements.

---

**Project evaluations.** We conduct independent evaluations of projects, services, partnerships, and initiatives of all types.

---

**Sector and portfolio reviews.** We evaluate portfolios of grant-funded projects as well as investment in key fields (e.g. arts, learning, etc.).

---

**Programme evaluations.** We bring significant experience in managing large-scale, multi-stakeholder programme evaluations.

---

We use evaluation as a tool for learning and change. We use techniques that are participative and inclusive, and are committed to demystifying evaluation rather than creating a dependency on outside evaluators.

We provide guidance, training and mentoring that helps to embed good monitoring and evaluation practice.

Need to produce rigorous and compelling evaluation evidence? Just give us a call.

## Recent Work

### Supporting self-evaluation

We worked with Sportscotland to improve self-evaluation practice among community sport clubs and hubs. We reviewed current evaluation practice, delivered introductory workshops on self-evaluation, and produced a set of step-by-step guides to using participatory evaluation tools.

### Playing the role of evaluation partner

We have worked with Macmillan Cancer Support on the ongoing evaluation of its high-profile work in libraries. This major two-year study is looking at the impact of the service on people affected by cancer and the role of libraries in supporting long-term conditions.

### Evaluating outcomes

We carried a systematic review of the range of 'wardens services' delivered across one major local authority. This identified opportunities to reduce overlap, deliver financial efficiencies, and re-engineer services to deliver more transparent and better outcomes.

### Spreading learning and innovation

We were appointed as 'learning partner' to capture, collate and distil the learning from the Acquiring Business for Good programme; a ground-breaking programme support business acquisition and trading among enterprising charities and social firms.

Further case studies are available at [www.socialvaluelab.org.uk](http://www.socialvaluelab.org.uk)

---

**Get in touch! - Call us on 0141 530 1479**

Studio 222, South Block, 60 Osborne Street, Glasgow, G1 5QH. [www.socialvaluelab.org.uk](http://www.socialvaluelab.org.uk)